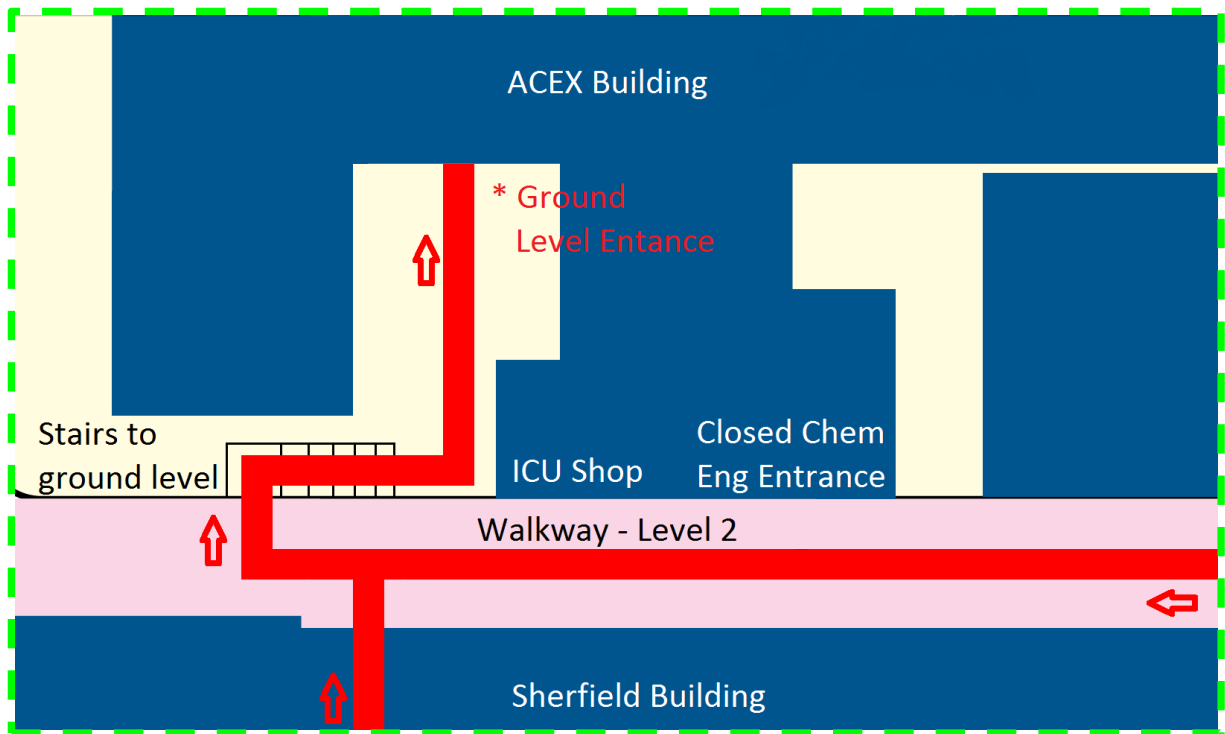


- Main walkway
- Main entrance
- Accessible route
- South Kensington Underground
- Bus stops
- Building entrances
- Vehicle entrance
- Hyde Park
- Cromwell Road
- Thurloe Place
- Thurloe Street
- Buildings where wheelchair access is not possible at this time

Route to Chemical Engineering department - signs will be posted

Lecture Theatre 1

Map area expanded below to show redirections due to closure of departmental entrance



The entrance at the walkway level will be closed on the day of the conference. Please use the ground level entrance and take the lifts to the second floor. Conference will be clearly signposted.